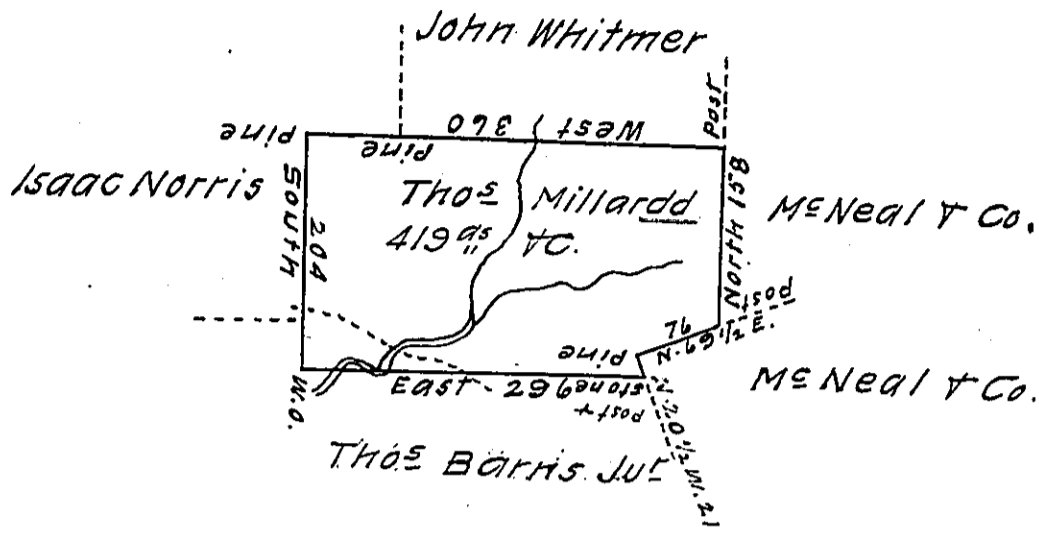


W



A draft of a tract of land called _____ situate in the County of Luzerne containing four hundred & nineteen acres & allowance, surveyed for Thos Millard the 3^d day of June 1793 by virtue of a warrant dated the 7th day of Jan^y 1793.

by W^m Gray D.S.

To Daniel Brodhead Esq^t }
 Surv^t Gen^l }

IN TESTIMONY that the above is a copy of the original remaining on file in the Department of Internal Affairs of Pennsylvania, made conformably to an Act of Assembly approved the 16th day of February, 1833, I have hereunto set my Hand and caused the Seal of said Department to be affixed at Harrisburg, this fifteenth day of February 1912

Henry Howell
 Secretary of Internal Affairs.